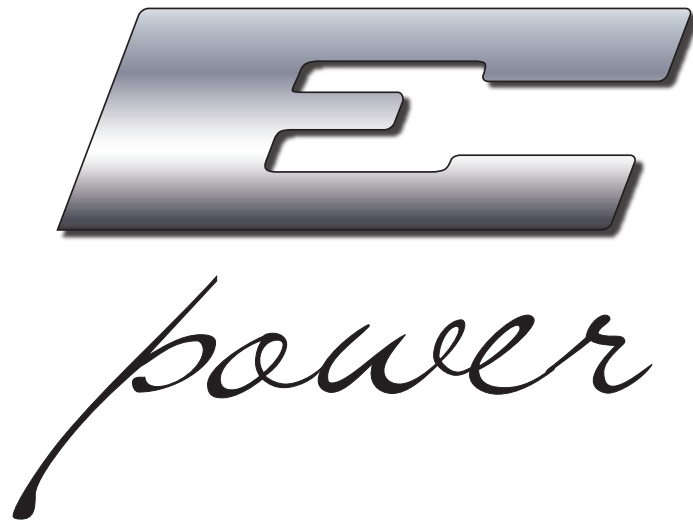
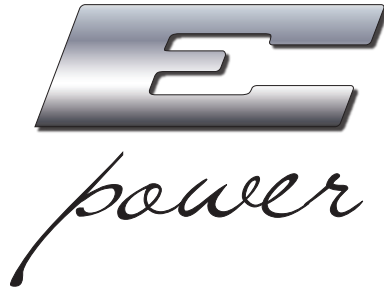


THE NIMBUS GROUP





THE E-POWER CONCEPT

As one of the largest boat-builders in Europe, The Nimbus Group shoulders a large responsibility and has great opportunities to influence the development of boats in the interests of environmentally sustainable development. Our corporate policy is to take great pains over building boats that enhance the relationship between boats, people and the environment. We have a vision; the increased freedom of people to move at will across the sea shall not be achieved at the expense of the environment.

AMBITIONS & ENVIRONMENTAL RESPONSIBILITY

As a result of our business concept, The Nimbus Group has set a course for the future in which environment issues play an increasingly important part. In line with this ambition we are now presenting our new E-Power Concept. The E-power Concept, also known as "Environmental Power", represents Nimbus environmental thinking for the future, in which we include the entire boat-building process from production engineering to climate-smart materials. We also look closely at construction engineering and hull design to attain ultimate propulsion, striving to achieve a state in which the entire chain makes as little impact as possible on our environment.

DECADES OF PRO-ENVIRONMENT THINKING

At The Nimbus Group the environment has always been an important factor. We are proud to possess documented environmental policies stretching back over several decades. Here are some examples:



1985 Innovation of the energy-efficient sandwich hull and Divinycell application.



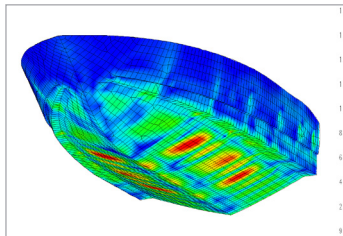
1995 Laminating boxes at Visby. These were an important step forward in improving working conditions and reducing external environmental impact.



1997 Injection implemented at the Ryds yard. Today, almost all of our boats are built using the vacuum injection method.



> 1999 Introduction of climate-smart materials such as ecologically grown teak and ongoing projects to inspect the ecological validity of all materials used in our boats.



2000 Stepped hull to improve boat efficiency at several levels, including those most important parameters; stability and fuel efficiency.



2005 The Ryds yards in the province of Småland win the local government environment prize for environmental work and reduced emissions.



2009 The Nimbus 27 Nova S is voted Best Environmental Motorboat by the Swedish Boating Industry.



2009 The Swedish Prime Minister visits our newly opened' state-of-the-art boat building yard in Mariestad, probably the most environmentally "clean" in Europe. Nimbus wins the Mariestad municipality's environment award.



WE DEVELOP THE BOATS OF THE FUTURE

We have commenced collaboration over our third-generation of hulls with the Chalmers University of Technology. The project has been named "A Conceivable Nimbus Boat with Energy Efficient Hull". The focus is on environment impact and an entirely new generation of optimally energy-efficient hulls.

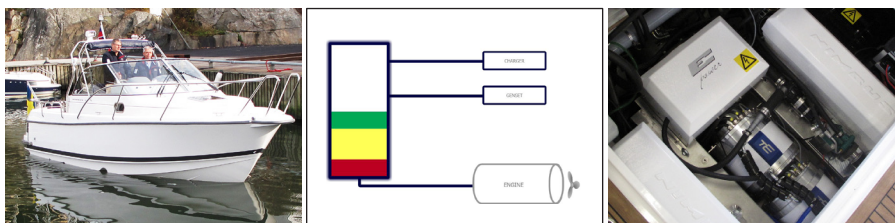


NEXT STAGE NOW

The 27 Nova S is a standard production boat, neither deck nor hull have been specially prepared or lightened in any way. In other words, the electric-powered engine we have installed has been given a really tough job. The power unit and the battery cells come from Electroengine. The transmission is a DPH duoprop drive from Volvo Penta.

This boat has a cruising speed of approximately 23 knots and a top speed of 27 knots. At cruising speed the boat has a range of 20 nautical miles. We will be able to present versions with longer range when the boat is launched onto the market. The craft is charged from a standard 230V/16Ah power-point. Charging takes 28 hours. When using a standard 3-phase 400V/32Ah power-point, full charging takes approximately 4 hours.

A "battery gauge" has replaced the fuel gauge to monitor the battery level. But just in case the power does run out, we have fitted a small diesel generator to get you home. The diesel generator runs at optimum speed to reduce emissions.



THE NIMBUS GROUP

GKSS-HARBOUR, BOX 5152, S-426 05 VÄSTRA FRÖLUNDA (GÖTEBORG), SWEDEN
TELEPHONE +46 31-726 77 00, FAX+46 31-29 46 98, E-MAIL INFO@NIMBUS.SE



BRANDS WITHIN THE NIMBUS GROUP